



CASE STUDY

A Seamless IT Transition For a Complex Manufacturing Operation

MC Services replaced a former provider and delivered a system critical to long-term success.

CLIENT: Maynard Steel



INDUSTRY: Industrial manufacturing

LOCATION: Milwaukee, Wisconsin

SERVICES: Steel casting for defense, mining, energy, and infrastructure applications

Executive Summary

**Maynard Steel** needed a new IT partner who could manage a complex transition from their previous provider. MC Services stepped in with capable staff, a clear process, and the technical depth to handle both business needs and system complexity.

Challenges

- Needed to replace a former IT provider without disrupting operations
- Required support through a complex and business-critical transition
- Valued a partner that could understand both the technical and business sides
- Expected a managed system that could scale and support internal processes

MC Services’ Approach

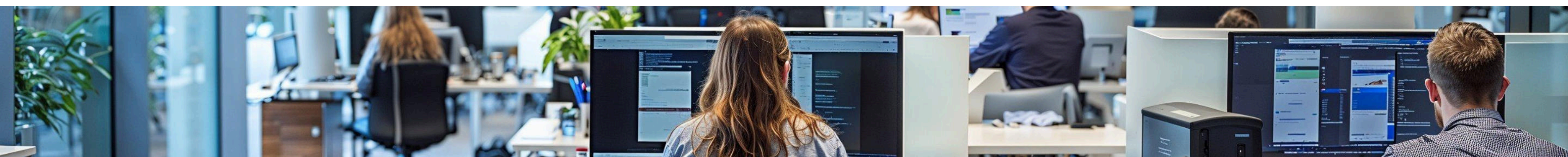
**MC Services** guided Maynard through every step with capable staff and practical planning.

Key Actions

- Handled the full transition from the previous IT provider
- Worked closely with internal teams to learn operations and identify needs
- Built a managed system that supports both production and business processes

Solutions

- Transition was smooth and professionally handled
- Business complexity was met with a thoughtful, tailored solution
- The final system aligned with the pace and scale of their manufacturing processes





## The Results

- Maynard moved forward with a reliable managed IT system
- Operations remained stable during the handoff
- Maynard gained a long-term partner who understood how to support their business

## Wondering if it's possible to switch IT providers without the stress?

MC Services brings structure and experience to complex transitions so you can keep moving forward.

**Let's talk today.**

### CLIENT TESTIMONIAL



"We brought MC Services in after we decided to move on from our last IT partner. Their highly-capable people were with us through every step of the transition and able to figure out our business complexities. Ultimately, they offered a managed system that has been incredibly critical to our company's success."

**Deborah Wabiszewski**

President, Maynard Steel

**REACH OUT TODAY!**

📍 N27 W 23921 Paul Rd.  
Pewaukee, WI. 53072  
United States

🌐 [mcservices.com](https://mcservices.com)

